

Center for Fisheries Research & Development - Gulf Coast Research Laboratory
University of Southern Mississippi
SEAMAP Fall Plankton Cruise Report – Cruise 1304 – R/V Tommy Munro

- **Introduction** – The SEAMAP Fall Plankton Survey was conducted September 5-6, 2013. A total of seven grid stations were sampled over a two-day period.

Objectives

- Conduct offshore plankton sampling during fall to assess larval recruitment dynamics in federal Gulf waters.
- Collect information on physical-chemical and environmental parameters in conjunction with plankton sampling.
- Submit data to the Gulf States Marine Fisheries commission/NMFS Data Manager.

Methods - Plankton samples were collected at grid stations in the north-central Gulf using bongo and neuston nets and following established SEAMAP protocols. Temperature, dissolved oxygen, and salinity values were measured with a Sea-Bird CTD, and meteorological conditions were recorded. Collection and processing of environmental data followed SEAMAP guidelines.

Results – A total of fourteen collections (seven neuston and seven bongo) were made during the Fall Plankton Survey on September 5 and 6 (Figure 1). All plankton samples were delivered to the NMFS Pascagoula Laboratory for shipment to the Polish Sorting Center.

Deviations - There were no deviations from standard SEAMAP protocol.

- **Cruise Participants** - USM/GCRL/CFRD

Submitted By:


Read Hendon, Principal Investigator

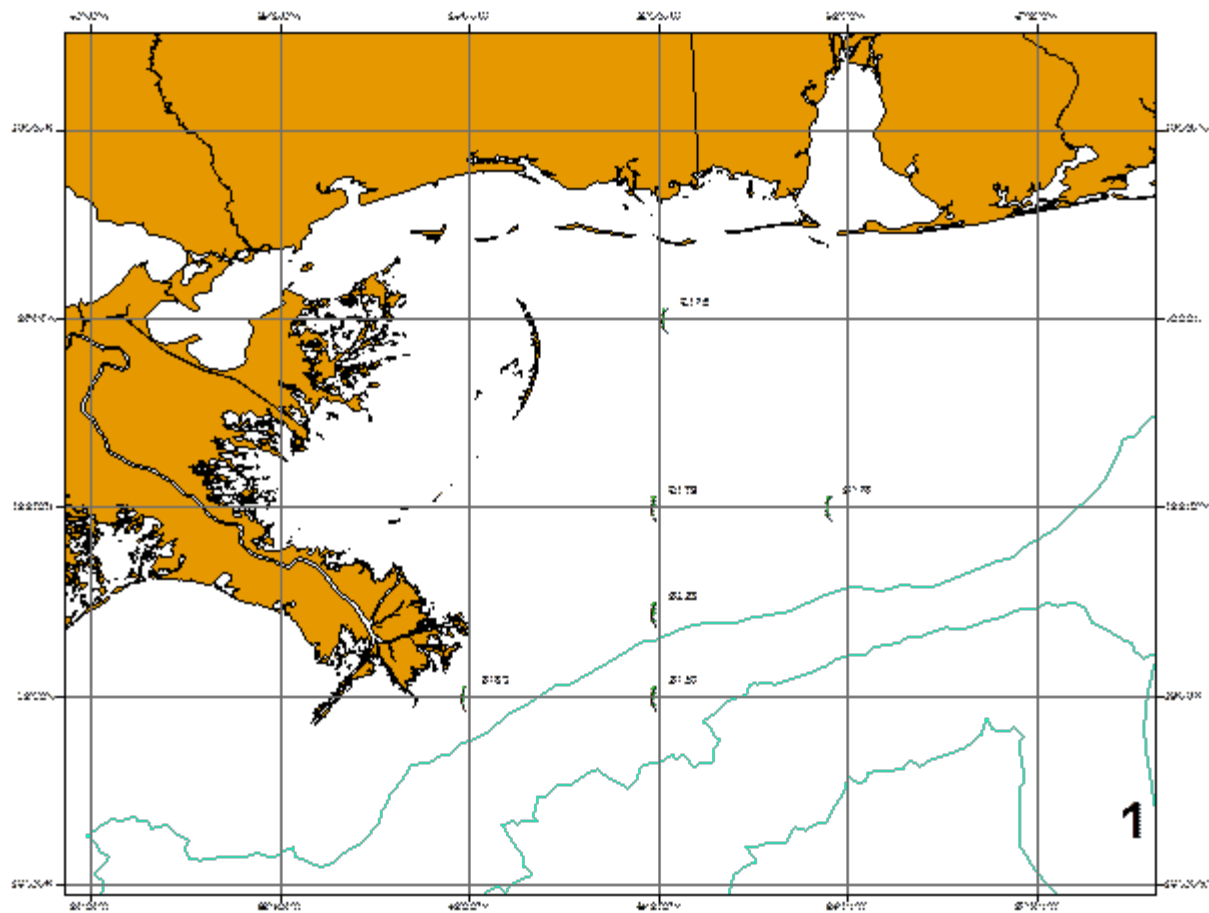


Figure 1. Map of 2013 fall plankton stations, *R/V Tommy Munro*, Cruise 1304.