

Center for Fisheries Research & Development - Gulf Coast Research Laboratory
University of Southern Mississippi
SEAMAP Fall Plankton Cruise Report – Cruise 1204

Introduction – The SEAMAP Fall Plankton Survey was conducted in September 2012. A total of eight grid stations were sampled over a three day period.

Objectives

- Conduct offshore plankton sampling during fall to assess larval recruitment dynamics in federal Gulf waters.
- Collect information on physical-chemical and environmental parameters in conjunction with longline sampling.
- Submit data to the Gulf States Marine Fisheries commission/NMFS Data Manager.

Methods - Plankton samples were collected at grid stations in the north-central Gulf using bongo and neuston nets and following established SEAMAP protocols. Temperature, dissolved oxygen, and salinity values were measured and recorded, along with meteorological conditions. Collection and processing of environmental data followed SEAMAP guidelines.

Results – A total of 16 collections (eight neuston and eight bongo) were made during the Fall Plankton Survey on September 11, 12 and 21 (Table 1; Figure 1). All plankton samples were delivered to the NMFS Pascagoula Laboratory for shipment to the Polish Sorting Center.

Deviations - There were no deviations from standard SEAMAP protocol.

Cruise Participants - USM/GCRL/CFRD

Submitted By:


 Read Hendon, Principal Investigator

Table 1. Fall plankton station data for 2012, Mississippi Cruise 1204.

SEAMAP STATION	DATE	LATITUDE	LONGITUDE	WATER DEPTH (m)
B183	9/11/2012	2900.04	8900.07	68
B180	9/11/2012	2900.03	8830.00	702
B323	9/11/2012	2913.13	8830.09	112
B179	9/11/2012	2929.87	8830.06	50
B322	9/12/2012	2915.13	8800.15	244
B176	9/12/2012	2929.99	8802.42	44
B177	9/21/2012	2959.91	8757.03	24
B178	9/21/2012	3000.00	8828.15	26

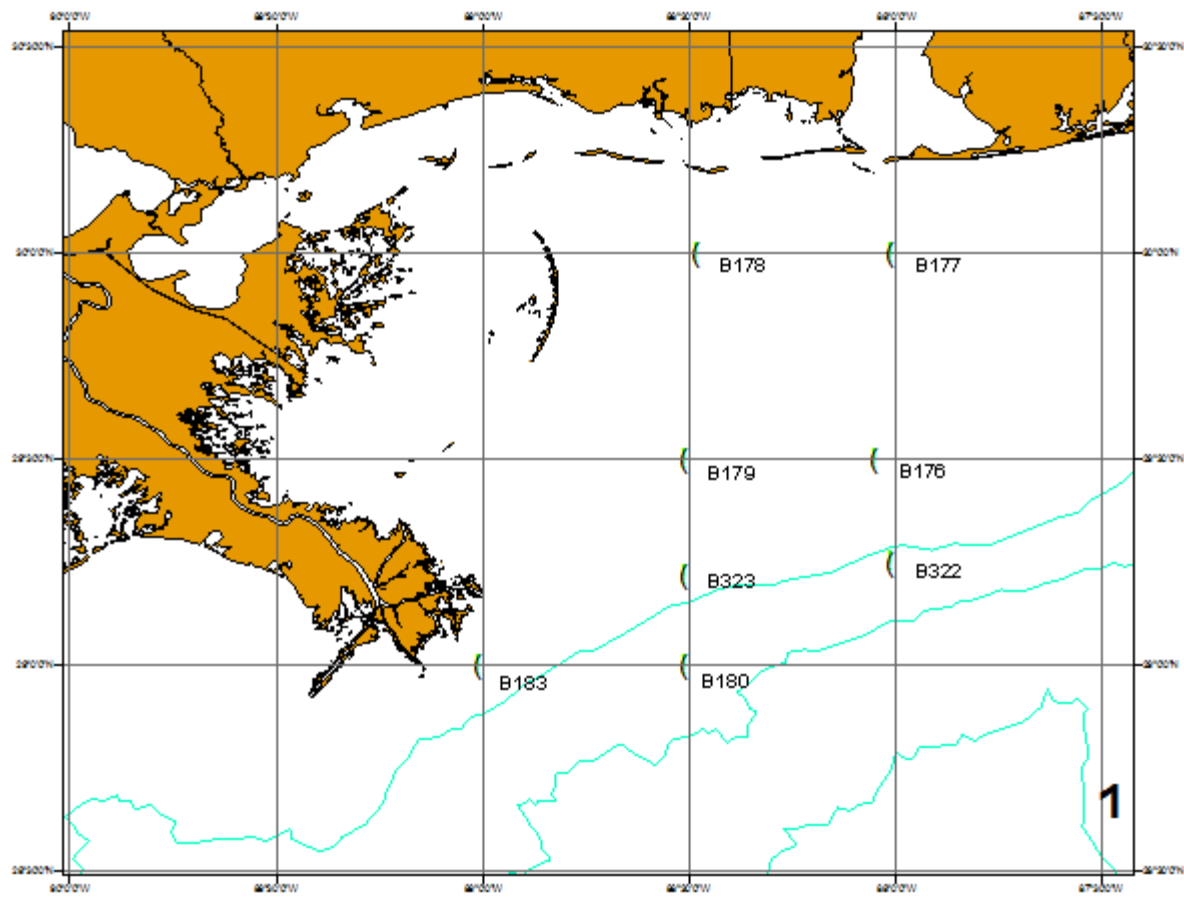


Figure 1. Map of 2012 fall plankton stations, Mississippi Cruise 1204.