

**Center for Fisheries Research & Development - Gulf Coast Research Laboratory**  
**University of Southern Mississippi**  
**SEAMAP Spring Plankton Cruise Report – Cruise 1201**

**Introduction** – The SEAMAP Spring Plankton Survey was conducted in May 2012. A total of three grid stations were sampled over a two day period.

**Objectives**

- Conduct offshore plankton sampling during fall to assess larval recruitment dynamics in federal Gulf waters.
- Collect information on physical-chemical and environmental parameters in conjunction with longline sampling.
- Submit data to the Gulf States Marine Fisheries commission/NMFS Data Manager.

**Methods** - Plankton samples were collected at grid stations in the north-central Gulf using bongo and neuston nets and following established SEAMAP protocols. Temperature, dissolved oxygen, and salinity values were measured and recorded, along with meteorological conditions. Collection and processing of environmental data followed SEAMAP guidelines.

**Results** – A total of six collections (three neuston and three bongo) were made during the Spring Plankton Survey on May 4 and 16 (Table 1; Figure 1). All plankton samples were delivered to the NMFS Pascagoula Laboratory for shipment to the Polish Sorting Center.

**Deviations** - There were no deviations from standard SEAMAP protocol.

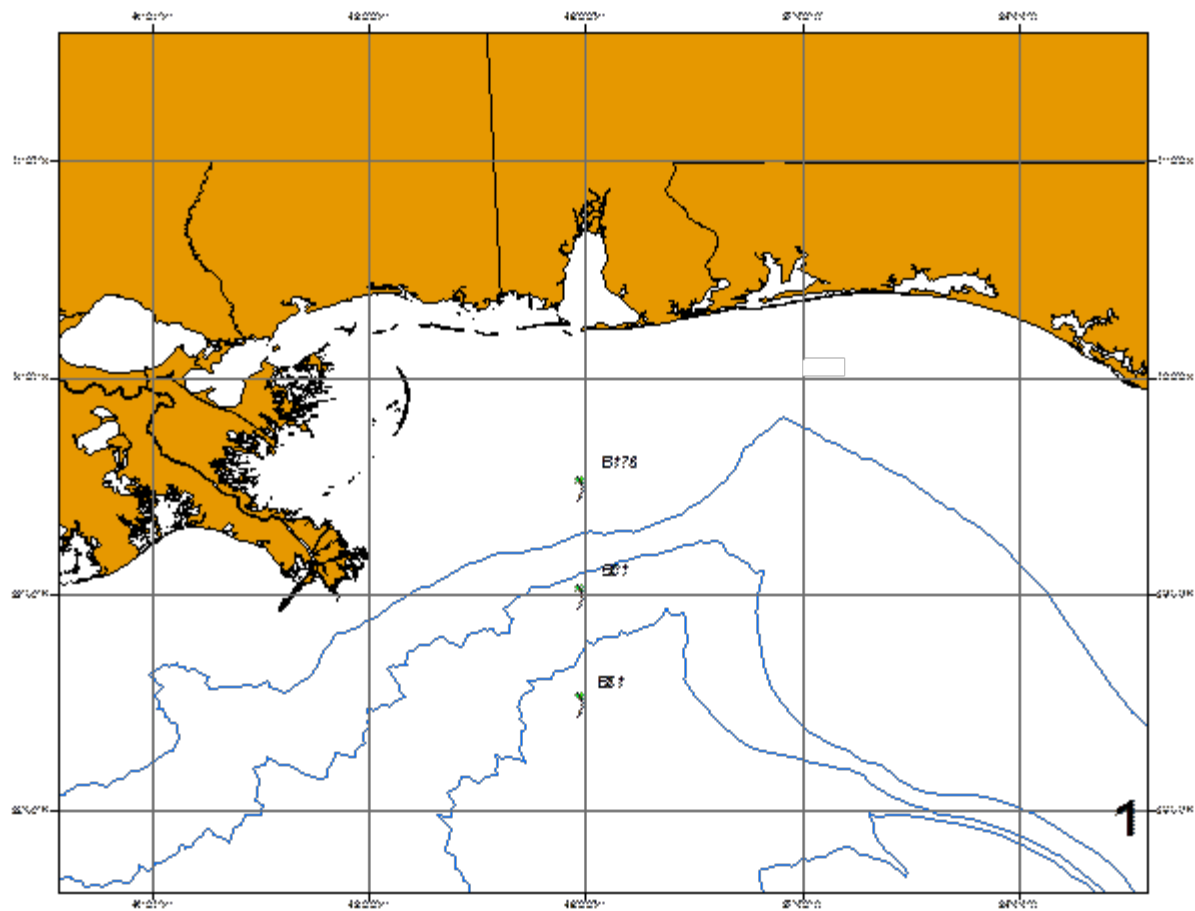
**Cruise Participants** - USM/GCRL/CFRD

Submitted By:

  
 Read Hendon, Principal Investigator

**Table 1. Spring plankton station data for 2012, Mississippi Cruise 1201.**

SEAMAP STATION	DATE	LATITUDE	LONGITUDE	WATER DEPTH (m)
B081	5/4/2012	2830.01	8759.91	304
B001	5/16/2012	2900.12	8800.05	382
B176	5/16/2012	2929.96	8800.04	45



**Figure 1. Map of 2012 spring plankton stations, Mississippi Cruise 1201.**